

# solaris *power*

BUILT FOR SAILORS



## SOLARIS POWER 48 LOBSTER

by NORBERTO FERRETTI

## TECHNICAL SPECIFICATIONS



## TECHNICAL SPECIFICATIONS

Model	Solaris Power 48 Lobster	
Design	Visctory Design	Brunello Acampora
Project Leader	Norberto Ferretti	
Builder	Solaris Power	
CE Category	B	
Length overall	14,35 m	47'08" ft
Hull length	14,03 m	46'03" ft
Water line length	14,4 m	47'24" ft
Max beam	4,87 m	15'97" ft
Draft	1,09 m	3'57" ft
Unladen Displacement	14.750 kg	32518 Lbs
Laden Displacement	17.550 kg	38691 Lbs
Fuel tank	1.500 l	396 US gal
Water tank	430 l	114 US gal
People capacity	12	
Engines std	2 x Volvo Penta D6 IPS 600	320 kw / 435 hp@3500 rpm
Engines opt	2 x Volvo Penta D6 IPS 650	353 kw / 480 hp@3800 rpm
Max speed	33 kn (IPS600)	35 kn (IPS650)
Cruise speed	23 kn (IPS600)	26 kn (IPS650)

---

The new **SolarisPower 48** blends superior build materials with a design pedigree second to none, resulting in new levels of sea-keeping, performance and comfort at sea.



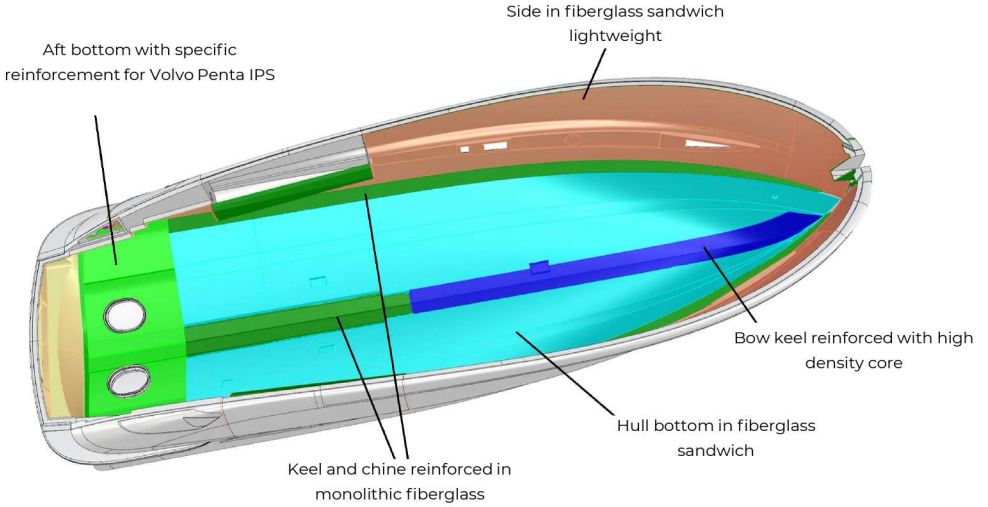
Solaris' motor-yachts enjoy the same exacting quality standards as the acclaimed Solaris sail range. The SolarisPower 48 is crafted in a modern production facility, skilled in the production of many prestigious motor-yachts from 50'-100' since 2008 and NOW it spends its know-how in the design of the SolarisPower 48

The **SolarisPower 48's walkaround decks** ensure crew **safety** and **confidence** in challenging weather.



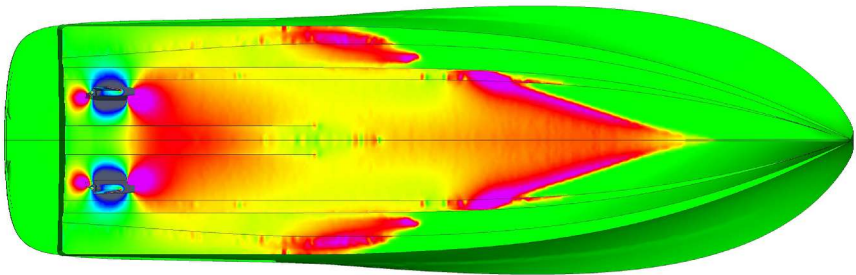
# Safe and easy in any condition

## Rigidity and Structural lightness



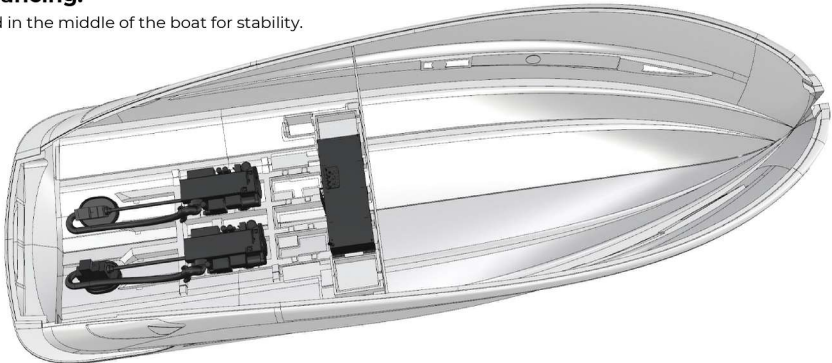
## Computational Fluid Dynamics (CFD)

main feature for the design of Solaris Power hulls



## Weight balancing:

Weights placed in the middle of the boat for stability.



Both **hull and deck** are moulded in **vinylester resins**, with hi-density PVC sandwich optimizing structural rigidity and thermal insulation.

**The bow and stern bulkheads** use hi-density PVC sandwich, **infused** with **carbon** and resin.

The 48's **Hardtop** is formed in hi-density PVC sandwich, using vinylester infusion and **carbon** fiber.



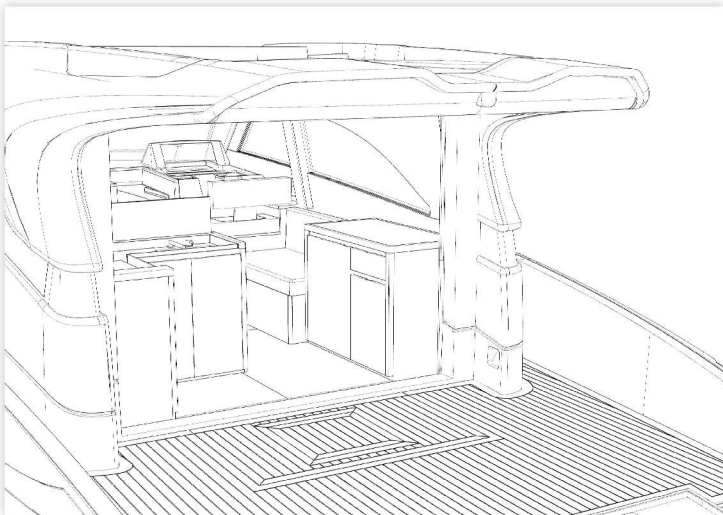
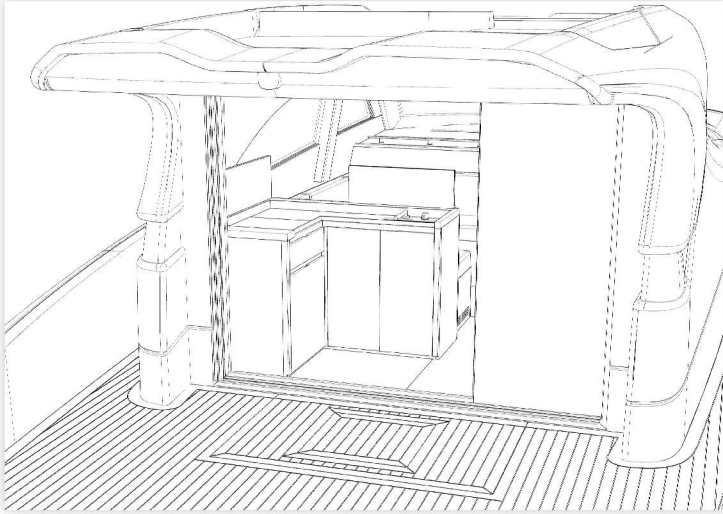
Twin Volvo Penta **IPS 600** in standard specification  
Or Twin Volvo Penta **IPS 650** engines (opt).

The engine room features 2 battery compartments:  
The first houses a 60Ah generator battery and  
two 170Ah engines batteries.  
The second houses three 170Ah service batteries.

In addition to the standard electrical system:  
one 80Ah battery charger and one 5Kw generator.  
A 7kw generator is optionally available for higher power

The kitchen designed to meet the needs of the different owners.

Induction hob,  
Stainless steel sink,  
Tap pop up,  
Drawer Refrigerator 115lt std  
Icemaker 5Kg/24h (opt)



**SolarisPower 48** has **2 available interior layouts**,  
to satisfy the wants of the most exacting of Owners



**Owner's cabin**  
Wood: Oak std





**Dinette**  
Wood: Oak std

Each Owner may select from a broad range of **superior quality bespoke fabrics and finishes**, individually crafted around Brunello Acampora's matchless design flair.



**Owner's bathroom.**  
Wood Oak std  
Separate shower stalls



**Guest's cabin**  
Wood Oak std.



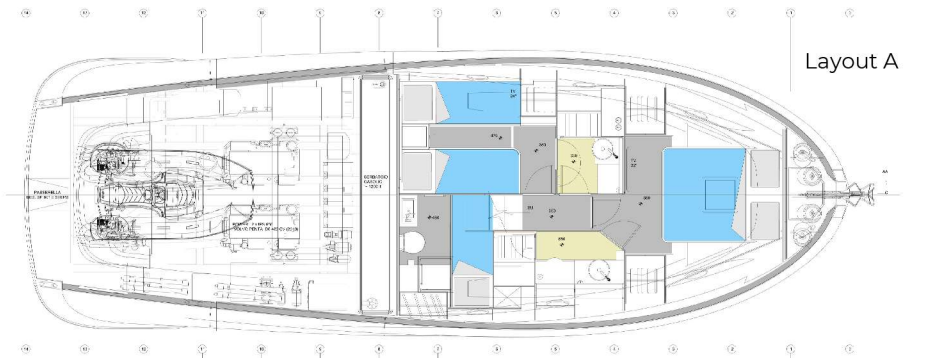
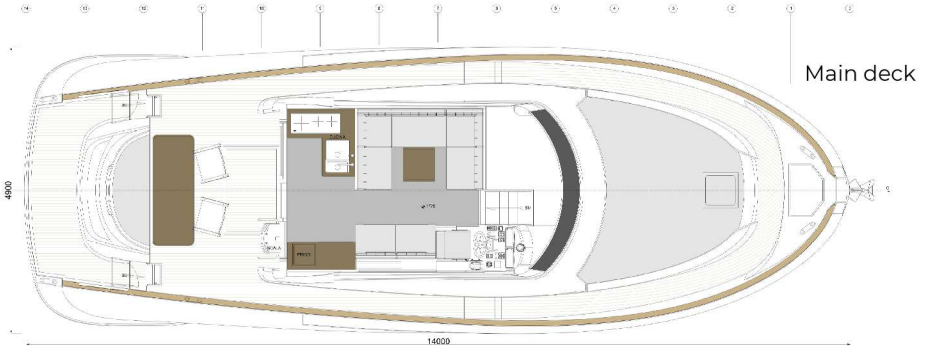
**Guest's cabin**  
Wood Walnut opt.



Oak std



Walnut opt



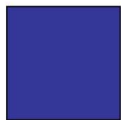
## Customize your SolarisPower 48



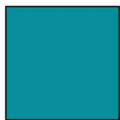
### Hull - Deck



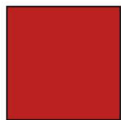
Dark Grey



Navy blue



Turquoise



Monaco Red



Pearl white



## Customize your SolarisPower 48



stern sunpad - bow sunpad - cockpit sofa

Sunbrella - Nattè

Silvertex



Oyster



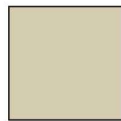
White



Taupe Chalk



White

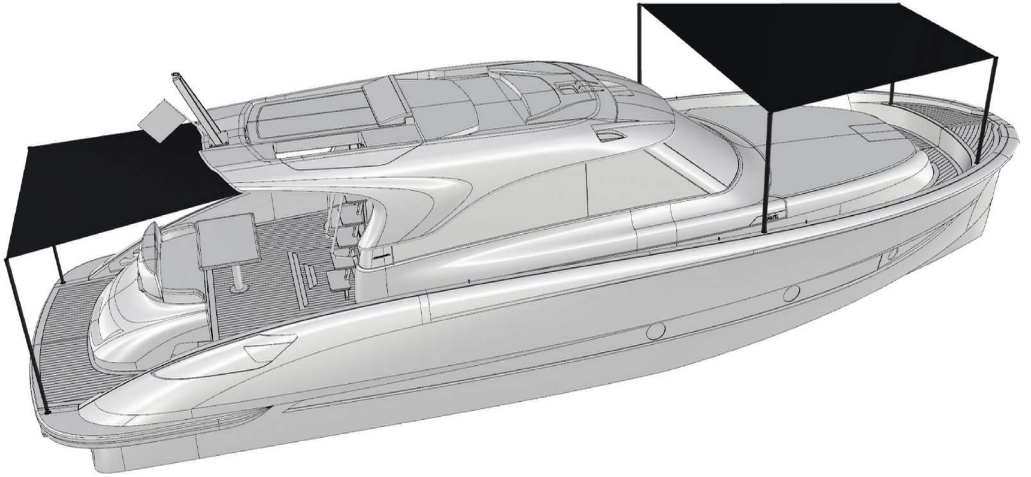


Cream



Alluminium

## Customize your SolarisPower 48



- 1 - Bimini Bow : 4 poles needed (opt)
- 2 - Bimini Stern: 2poles needed and rail on H.T (opt)

### Parasol



White



Titanium  
Look



Carbon  
Look

---

## **STANDARD EQUIPMENT**

### **HULL & DECK**

Polished stainless steel deck equipment  
Electric 1500 W windlass with telescopic hawse and remote control  
Galvanized Delta anchor kg. 20 and 50mt 8mm chain  
Teak bathing platform  
Platform bathing ladder extractable made by stainless steel and teak  
Hydraulic passarelle  
Solid teak gunwale  
Bow and stern sun-pads and stern aft seats in Silvertex fabric  
Sliding glazed cabin access door  
Acoustic high water alarm for stern and bow bilges  
Midships mooring bollards (1 each side)  
Fenders plugs  
Antifouling paint  
Courtesy lights to transom steps  
Zinc anodes

### **DASHBOARD:**

Helm console with complete instrumentation  
Pilot chairs  
Electronic throttle levers & Volvo Penta IPS Joystick  
12" Volvo Penta navigation display  
Volvo Penta auto pilot  
Rudder indicator  
Echo sounder, log milometer and water temperature indicator with tridata DST 800 system  
Fuel and water indicator  
VHF Garmin 210i with DSC system  
Compass  
Windscreen wipers with windscreen washer included

### **MAIN DECK HALL:**

Dinette with fabric "U" sofa and table  
Two seats sofa  
Light walnut essenza furniture  
Sides curtains  
Led lights  
Vinyl panels ceiling  
Stowage peak access from the sofa

### **COCKPIT:**

Mooring covers  
Outdoor table

**OWNER'S CABIN:**

Two wardrobes  
Sides windows with two opening portlights  
Reading lights  
Double bed with mattress  
LED lights  
Beauty table and seat  
Carpeted floor  
Vinyl covered ceiling  
Mirror  
Curtains

**LOWER DECK DINETTE: (only for one cabin version)**

Sides windows with one openable portlight  
Fabric L sofa  
Stowage peaks under the seats  
Low cabinet  
Cabinet with shelves  
Pleated curtain  
Moquette floor

**GUEST'S CABIN: (only for two cabins version)**

Bathroom access  
One side wardrobe with glove compartments  
One bedside table  
Window with openable portlight  
Two reading lights  
Two single beds with mattresses  
Led lights  
Fabric headboard  
Vinyl covered ceiling  
Curtains

**GUEST'S BATHROOM AND DAY: (Only for two cabins version)**

Bathroom accessories  
Wardrobes and shelves  
Detached shower with crystal door  
Glass washbasin  
Led lights  
Openable portlight inside the shower cabin  
Two doors in the corridor and in the guest's cabin  
Mirror  
Pleated curtain  
Ceramic electric WC with control panel 3/4 full



---

**PROPULSION SYSTEM AND ENGINE ROOM:**

VOLVO PENTA IPS 600 (320 Kw / 435 Hp) engines with manual interceptor system  
Electronic blowers (nr. 2)  
Volvo toolbox  
Hatch and stainless steel ladder  
Boiler 220V 25 lt.  
Automatic/manual fire extinguisher 12 kg.  
Fuel filters water separator  
Inspection lights  
Bow watertight bulkhead  
Stainless steel gasoline tank 1500lt

**BOW PEAK:**

Chain peak  
Two 25mt mooring lines  
Winch remote control  
Inspection hatch  
Fresh water shower for chain washing

**UNMOUNTED CREW CABIN:**

Deck access portlight  
Stowage peak access portlight  
Access ladder  
Planking  
N. 2 storage shelves

**SYSTEMS:**

Joystick docking assistance  
Remote control for engines power shut-off  
Fire extinguisher (one in each cabin)  
Electric equipment composed by:  
- Kohler generator 7000W  
- generator battery 60Ah 12V  
- engines battery set 170Ah 12V  
- auxiliary services battery set 170Ah 12V  
- battery charge 80Ah 12V  
- 12V illumination in cabins  
- Battery isolator switches  
Bilges output system with 3 pumps (2 two of them automatics)  
Fresh water pump  
VHF transceiver system  
Stabilising manual interceptor system  
Electric WC system with fresh water and 75lt black water tank  
32A quay plugs  
Cathodic protection with zinc anodes  
Grey water output system with electropump and two tanks 115+70 lt. Tot. 240 lt  
Stainless steel fresh water tank 430lt

---

**EQUIPMENTS:**

220 V quay cable

Fendresses n. 6

**SUN TOP:**

Mast with radar predisposition signals and navigation light

Flag pole

Acoustic alarm

Navigation lights

**MAINDECK KITCHEN:**

Four burners induction cooktop

Worktop

Popup sink

Dustbin

Franke oven

Stainless steel basin n. 1

220V plugs

Led lights

Drawer and closets

Dishes for 6 people



Solaris Power - Via A. Masetti, 30 - 47122 Forlì (FC) Italy - tel. +39 0543 807062

This document is not a contractual offer. It has an informative and promotional purpose. Solaris Power reserves the right to modify any product, specification or description contained in this catalogue at any time without notice.

---

solaris *POWER*  
BUILT FOR SAILORS

