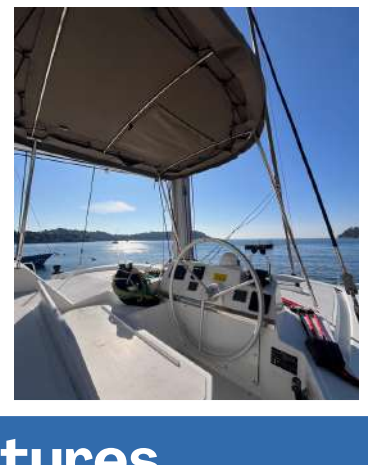
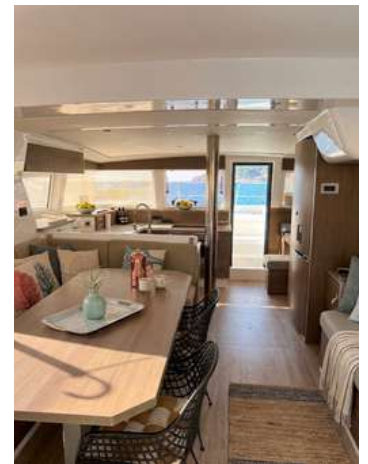


BALI CATAMARANS 4.2



Features

Brand :	Bali Catamarans	Cabins :	3
Model :	4.2	Number of passengers (CAT.A)	10
Year :	2022	Engine :	2 x Yanmar 45 HP
Lenght :	12,86 m	Engine hours :	600
Wide :	7,07 m	(data for guidance only)	
Location :	Villefranche-sur-mer (France)	Warranty :	Expired
		Price :	490 000€ Inc VAT.

Description

The Bali 4.2 Owner's Edition embodies elegance and independence at sea, combining space and autonomy for uncompromising sailing. Designed for comfort, it offers a refined interior with an owner's suite, modern amenities, and a fully equipped kitchen just like at home. Its energy and freshwater autonomy allow for unrestricted exploration, while its high-performance rigging and advanced electronics guarantee smooth and safe sailing. Non-refundable VAT.

Contact

Alpes-Maritimes area - **LB Yachting**
8 Avenue de Verdun, 06600 Antibes
+33 4 92 90 33 95

Bouches-du-Rhône area - **Europ Yachting**
20 Rue de la Guirlande, 13002 Marseille
+33 4 91 91 41 22

SPECIFICATIONS

Type :	Sailing catamaran	Passengers (CAT A)	10
Make :	Bali Catamarans	Cabin :	3
Model :	4.2	Sleeping accommodation :	6
Year :	2022	Shower room :	3
Superstructure :	Polyester		
Deck :	Polyester	Fresh water :	860 L
Colour :	White	Fuel :	640 L
Length :	12,86 m		
Beam :	7,07 m		
Draught :	1,26 m		

OPTIONS LIST

3 cabins version - 3 WC - 3 shower

Pack Specifications

Freshwater filter and purifier
70 amp combined charger - 12V/230V converter - 1600VA
2 additional 130 amp service gel batteries
Battery monitor
336-liter refrigerator-freezer with ice water dispenser
1 electric winch (mainsail halyards, solent sheet, main sheet, reefing points, and davits)
Automatic reefing on 1st and 2nd reefs
Forward pulpits with polywood seats and continuous rigid guardrails
1000W vertical electric windlass
Manual lifting system for the aft bay assisted by pneumatic cylinders
Sliding side bays
Courtesy lighting in the saloon
Gas oven
2-burner induction hob (3200W total)
Microwave oven
Wall-mounted galley cupboard
Back cushions Forward cockpit (seats and backrests)
Cruiser seat cushions (seats and backrests)
Aft bench seat cushions (seats and backrests)
Engine hatches and forward cockpit lockers equipped with gas struts
Aft davit with a system for electric raising of the tender
Comfortable swim ladder with handrails and wide teak steps
Cockpit shower with hot and cold water
Raymarine PACK 1 electronics including: P70S autopilot, AXIOM 7" GPS plotter, MULTI I70S, RAY 63 VHF
Seawater pump for deck washing
25 kg spade anchor, 70 m of chain

Rigging - Sails

105 m² asymmetrical spinnaker on furler

Sveppen furler

Full-battened mainsail and Solent reinforced with Dacron with anti-UV strip + BALI lazy bag & lazy jack + sheets

Mechanics - Safety Equipment

9.36 kW lithium battery

45 hp Yanmar engine

Fisher Panda 8000i generator

3000 W inverter

Folding propellers

1050 W solar panels (400 W original + 650 W flexible)

Quantum 2 radar Glomex internet antenna Television

Safety equipment: 8 life jackets with flashing lights, distress flare box, fire extinguishers, 6-person life jacket

Remote control with chain counter at the helm station

Interior layout

Webasto heating

Opening front window with lock in ventilation position

Watermaker 105L/H

3 electric freshwater toilets

Custom-made mattresses in the owner's cabin

Fans in the cabin

1 230 microwave oven

1 washer-dryer with integrated bathroom furniture

Roller blinds in the 3-cabin version

Height-adjustable interior table

Exterior layout

Canvas helm station bimini

Forward exterior table for 6 people

Sun protection for the foredeck

Grill with gas installation

Highfield 3.2m tender with 1800wt aquamot trend 1.8 engine, and additional 48 volt 50 ah tender battery

DISCLAIMER: The above data has been prepared to the best of our knowledge, but it remains non-binding and is not guaranteed. We present the details of this boat in good faith, but we cannot guarantee or warrant the accuracy of this information, nor the condition of the boat. The prospective owner should call upon their marine surveyor to examine and verify all details before transfer of ownership. This boat is offered subject to prior sale, price change, or withdrawal without notice. This document is not contractually binding.

BALI CATAMARANS 4.2



BALI CATAMARANS 4.2



BALI CATAMARANS 4.2



BALI CATAMARANS 4.2



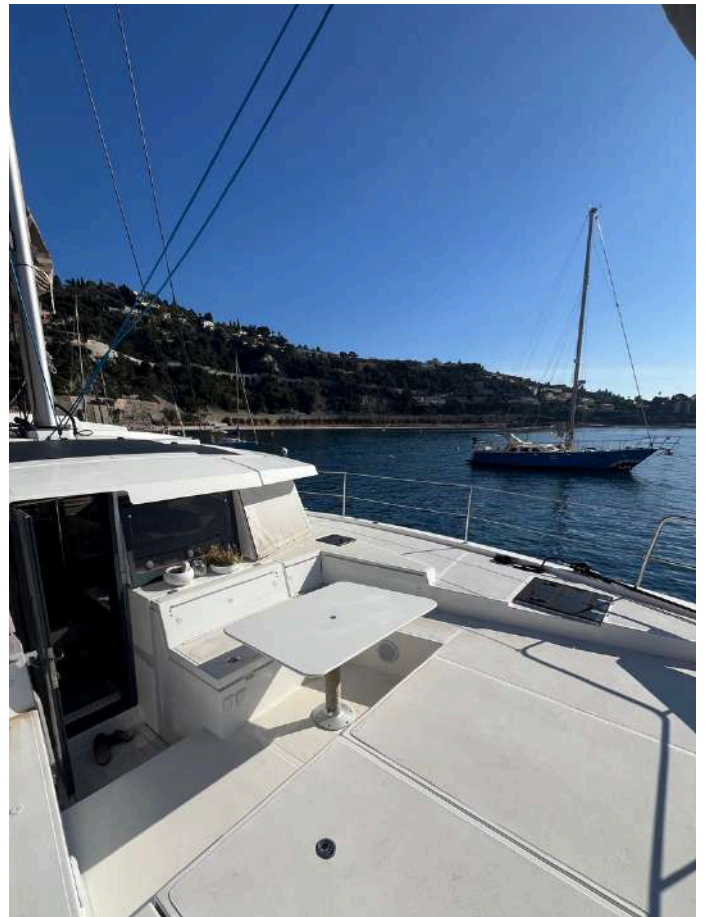
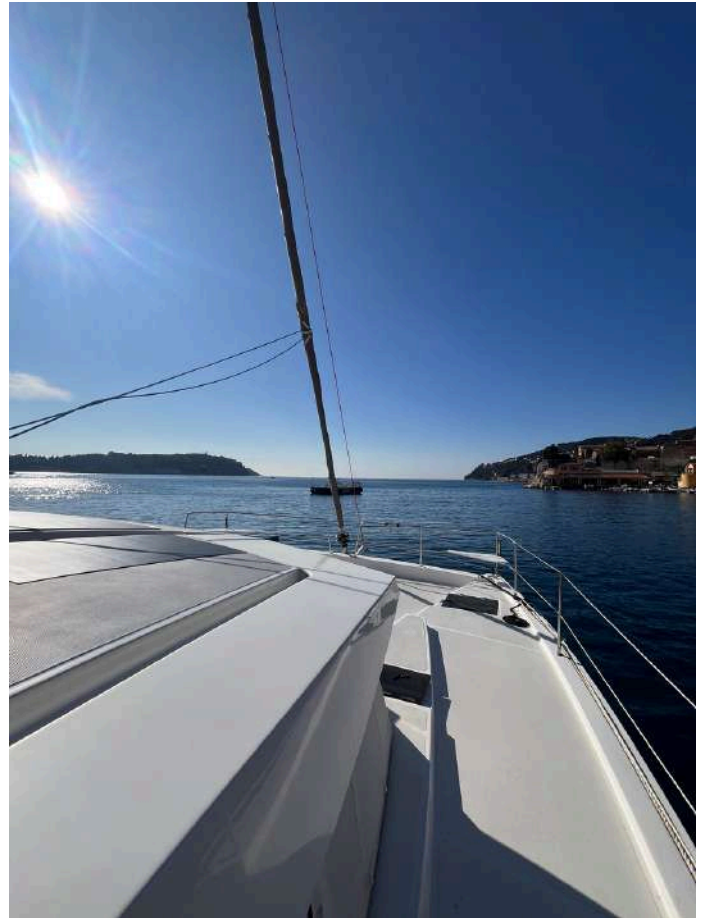
BALI CATAMARANS 4.2



BALI CATAMARANS 4.2



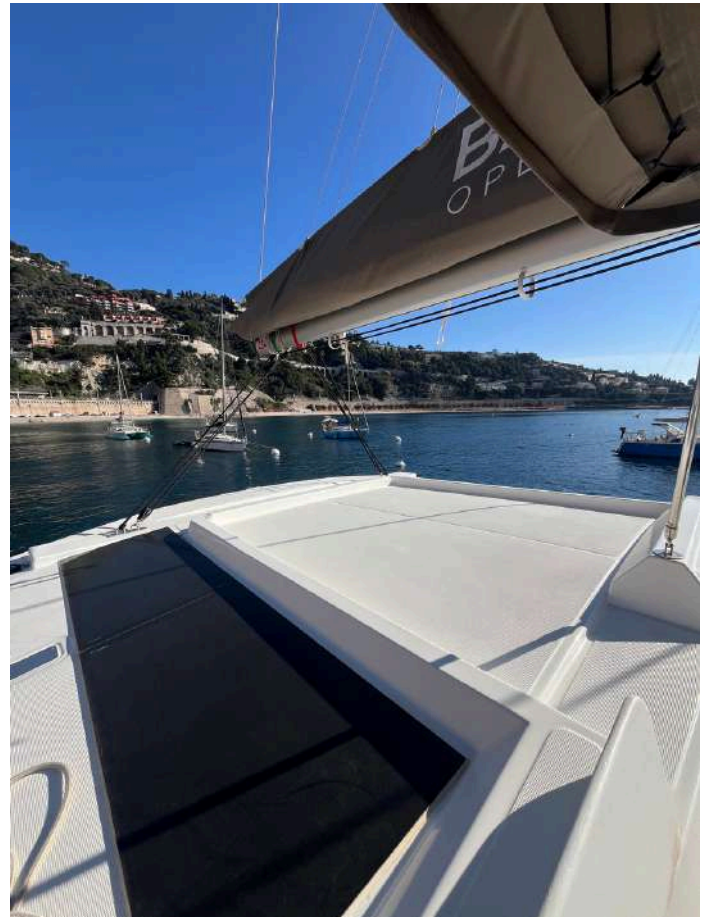
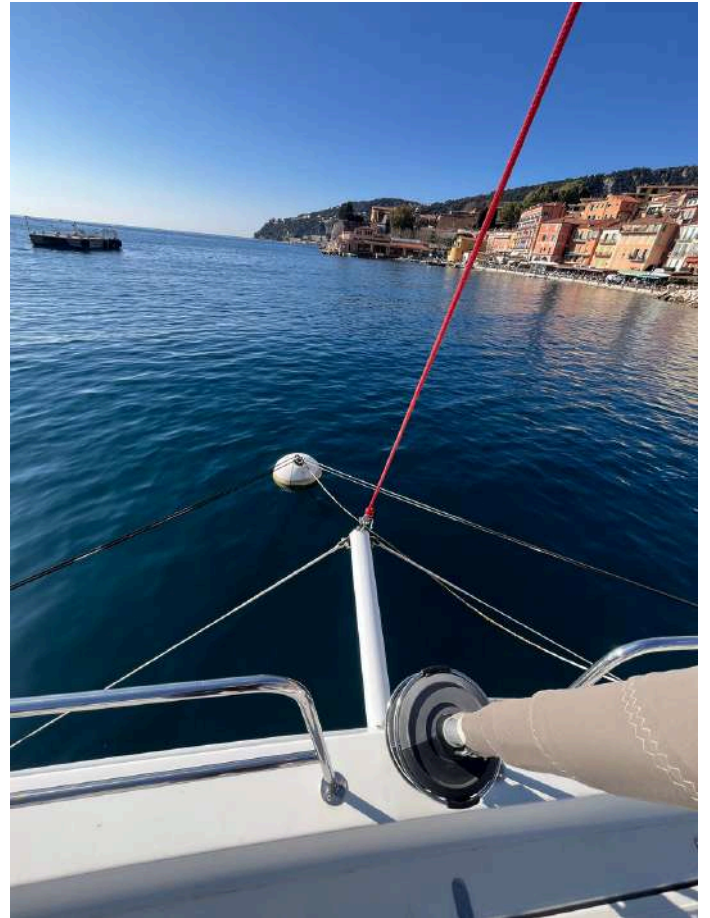
BALI CATAMARANS 4.2



BALI CATAMARANS 4.2



BALI CATAMARANS 4.2



BALI CATAMARANS 4.2

