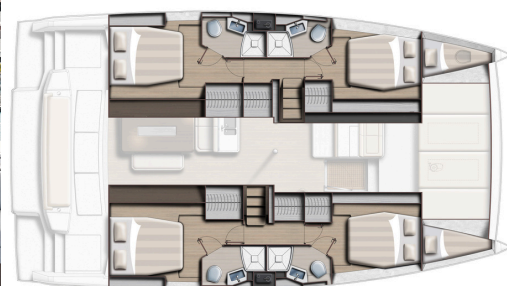


# BALI CATAMARANS 4.6



## Features

Brand : Bali Catamarans  
Model : 4.6  
Year : 2022  
Length : 13,68 m - 44,88 ft  
Wide : 7,66 m - 25,13 ft  
Location : Bodrum (Türkiye)

Cabins : 4  
Number of passengers (CAT.A) 12  
Engine : 2 x Yanmar 57 HP  
Engine hours : 500  
(data for guidance only)  
Warranty : Expired  
Price : **834 000€ Inc VAT.**

## Description

The Bali 4.6 BEGONVIL is a fully equipped 4-cabin catamaran combining comfort, autonomy, and performance. Featuring air conditioning, a watermaker, generator, and dishwasher, it's ideal for extended cruising. The spacious flybridge, sunbeds, and forward cockpit offer multiple relaxation areas. With upgraded sails, electric winches, and high-end navigation gear, sailing is smooth and efficient. A perfect choice for effortless living at sea.

## Contact

Alpes-Maritimes area - **LB Yachting**  
8 Avenue de Verdun, 06600 Antibes  
+33 4 92 90 33 95

Bouches-du-Rhône area - **Europ Yachting**  
20 Rue de la Guirlande, 13002 Marseille  
+33 4 91 91 41 22

## SPECIFICATIONS

Type :	Sailing catamaran	Passengers (CAT A)	12
Make :	Bali Catamarans	Cabin :	4
Model :	4.6	Sleeping accommodation :	8
Year :	2022	Shower room :	4
Superstructure :	Polyester		
Deck :	Polyester	Fresh water :	860 L
Colour :	White	Fuel :	800 L
Length :	13,68 m - 44,88 ft		
Beam :	7,66 m - 25,13 ft		
Draught :	1,27 m - 4,16 ft		

## OPTIONS LIST

### 4 cabins version - 4 WC - 4 showers

#### Pack Specifications

4-cabin version (2 on starboard + 2 on port side) – 4 bathrooms + equipped sunbeds for 1 crew

Freshwater purifying filter

Combined battery charger 80 amp - Inverter 24V/230V - 2000VA

2 extra service batteries of 12V - 130 amp

Battery controller

House fridge freezer (635L) with chilled water, ice maker and dedicated inverter

Indirect lighting in cabins

Forward cockpit and transom courtesy lighting

Mainsail electrical winch

Lifting system for dinghy (strengthened the steel system for heavier lifting)

Electric windlass 1500W

Hot and cold cockpit shower

Comfortable swim ladder with large handles and teak steps

Extra fuel tank of 400L for a total capacity of 800L

Extra Fresh water tank of 400L for a total capacity of 860L

Gaz oven

Pot holders on burner cooking

Saloon tilting bay/door electrically assisted by hydraulic struts

Engine room & locker hatches on gaz struts

Helm station seat cushions (seat and backrest)

Forward cockpit cushions (seats and backrests)

Seats for aft bench (seats and backrests)

2 layers of antifouling with Epoxy base coat

Raymarine Electronic PACK including : Pilote auto P70S, GPS plotter AXIOM 7", MULTI I70S, VHF RAY 63 + VHF RAY MIC at steering station, AIS receiver transmitter, full touch screen AXIOM 12" at steering station

## **Rigging - Sails**

2 electric winches for the headsails  
Reinforced Dacron mainsail & solent with UV protection + Lazy-Bag & Lazy-Jack

## **Mechanics - Safety Equipment - Electronics**

2 x Yanmar 57hp engines  
11KW 50Hz generator with soundproofing and 230V remote control (555 HOURS)  
2 solar panel kits: 10 x 100W  
Remote control with chain counter at the helm station  
LED TV screen in the saloon with electric lift and TV antenna  
Spotlight for chain and anchor visibility and forward monitoring of the boat  
Additional 40m of chain for a total of 105 meters  
New 35kg Ultra anchor + original anchor retained for stern anchoring  
Reinforced stainless steel system for heavier lifting  
Extra service battery  
Safety equipment for 8 people

## **Comfort**

Reversible air conditioning in the hulls  
230V watermaker – 240L/H  
4 large-model freshwater electric toilets  
Dishwasher for 9 place settings  
9-burner glass cooktop and large-capacity oven instead of standard size

## **Exterior layout**

Large fixed bimini (stainless steel frame, LED lights, canvas, and cut-outs for excellent visibility of the mainsail)  
Fixed table in the forward cockpit  
Flybridge upholstery (cushions: seats and backrests)  
Flybridge table with telescopic leg  
Transparent enclosure kit (crystal PVC) and canvas for flybridge closure (requires large bimini option)  
Colored sun awning for the forward cockpit  
Exterior roof curtains for saloon sun protection (black Batyline fabric)  
Protective cover set for the helm station  
Set of foldable deck sun loungers  
Sunbed cushions for the flybridge (with backrests)  
4 large comfortable cushions  
Permanent protection for the aft beam  
Spring-loaded stern cleats  
2.60m folding composite gangway with stanchions, bag, and female deck fitting  
Gas plancha with gas installation  
Electric davits

# BALI CATAMARANS 4.6



## Interior layout

Portside forward locker converted (shower and shower head)  
Starboard forward locker converted (mattress, blackout curtain, and porthole)  
Blackout pleated plexiglass blinds, porthole floaters  
Mosquito screens for portholes  
Safe box  
Elastomer slatted bed bases  
Portable mini washing machine

**3.40m hypalon tender (max size) with console + 20 HP outboard motor + lifting slings**

**DISCLAIMER:** The above data has been prepared to the best of our knowledge, but it remains non-binding and is not guaranteed. We present the details of this boat in good faith, but we cannot guarantee or warrant the accuracy of this information, nor the condition of the boat. The prospective owner should call upon their marine surveyor to examine and verify all details before transfer of ownership. This boat is offered subject to prior sale, price change, or withdrawal without notice. This document is not contractually binding.